

# ARCHIMARINE FOR CONTRACTING



## Contact Us

**P:** +2 03 4225432 - +2 01009006020

**E:** [info@archimarine.com](mailto:info@archimarine.com)

**w:** [www.archimarine.com](http://www.archimarine.com)

22 zaki ragab st. Smouha  
alexandria, Egypt

# ARCHIMARINE CONTRACTING PROFILE

# COMPANY PROFILE

*Archimarine is an Egyptian Contractor Specializing in the Marine Engineering.*

## TABLE OF CONTENT

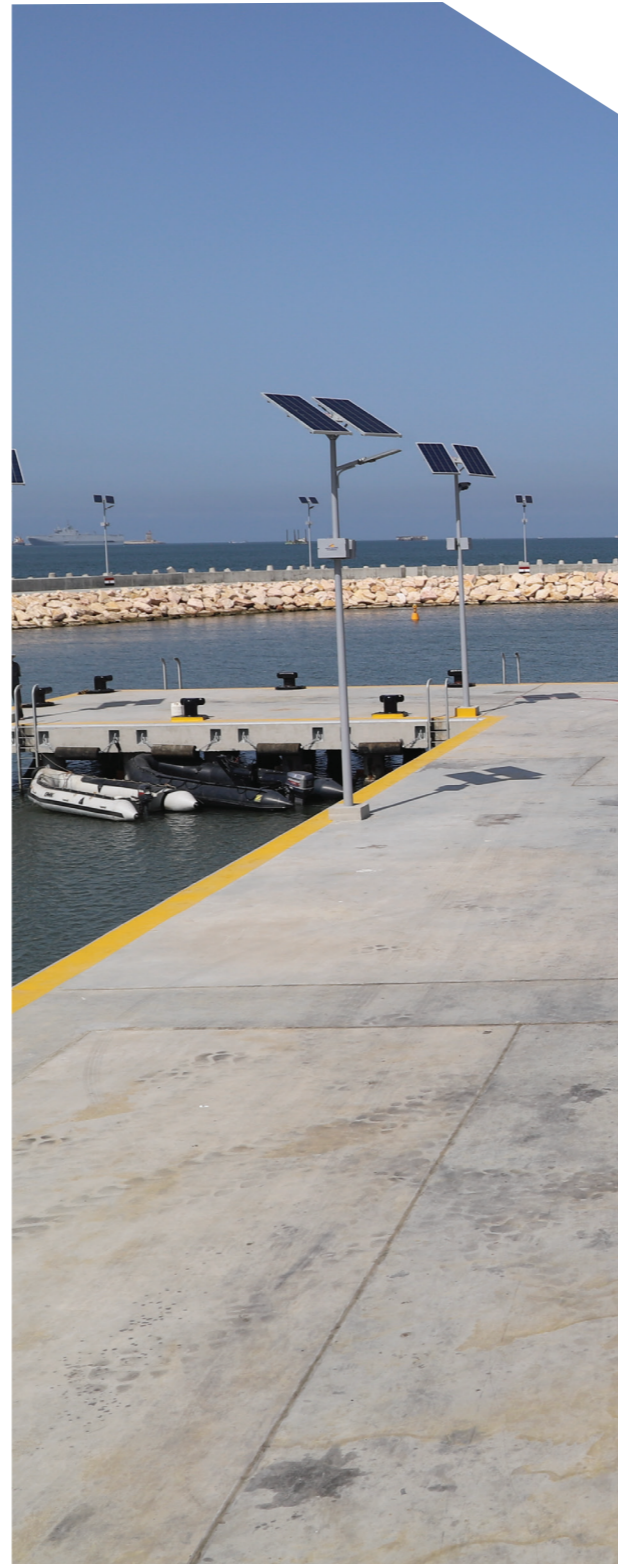
About Company	04
CEO Statment	05
Company History	06
Mission & Vission	07
Company certifications	08
Our services	10
Equipments	12
Projects	18
Company Highlights	30



# ABOUT COMPANY

*since its establishment in 2011, Archimarine has specialized in harbor and marine structures, implementing major projects in the marine field*

Archimarine has executed projects in the marine field for various government authorities (such as The Egyptian General Authority for Shore Protection –Naval Forces - Engineering Authority of Armed Forces – Reconstruction and development Authority of North Cost- ...) and also implemented a number of projects for the private and foreign sectors (such as The Egyptian Operation Company for Natural Gas liquefaction –El- Nasr Company for mining -NOSCO Egypt for transport overseas-Hutchison Ports Holdings- PETROBEL - Belayim Petroleum Co - Petroleum Marine Services Co. PMS ...).



# CEO STATEMENT

*Mostafa Abd El-Hady*

*Our diligent employees are our greatest asset and are the lifeblood of the company.*



# COMPANY HISTORY

## 2011

Archimarine was established and created to specifically specialize in harbor and marine structures. The idea was to compete in a field that was at the prime of its time and implementing major projects in the marine field.

## 2013

Archimarine landed a mega project for repairing of the ELNG Breakwater in Idku City with the Egyptian Operating Company for Natural Gas liquefaction Projects S.A.E (Egyptian LNG). The project was executed with excellence and safely.

## 2019

Archimarine has become a 1st category contractor in Dredging and fluvial and Marine works according to the Egyptian Federation for the Building and Constructions. With a capital equity of twenty million Egyptian pounds and many collaborations

# MISSION & VISSION

## MISSION

Our mission is to undertake the Marine and Engineering Business with a focus on “cost leadership” while excelling in every aspect to meet the stringent requirements regarding quality, and safety.

- Ensure that the latest in marine and engineering technology and equipment are brought to bear on every Archimarine work to tackle the most challenging of projects

## Vission

Archimarine has a lofty and eternal quest to be regionally and globally recognized as one of the finest leading Egyptian-International marines and dredging companies known for its quality and professionalism

- Think and work together assiduously for mutual prosperity



”

*No task is so important  
that we cannot take  
time to do it safely*

# COMPANY CERTIFICATIONS

Archimarine has been awarded several international quality certificates (ISO 14001:2015 & ISO 45001:2018 & ISO 9001: 2015) from Major international company (the URS).



**ISO 9001-2015**  
Certificate of registration  
Integrated cobtracting works

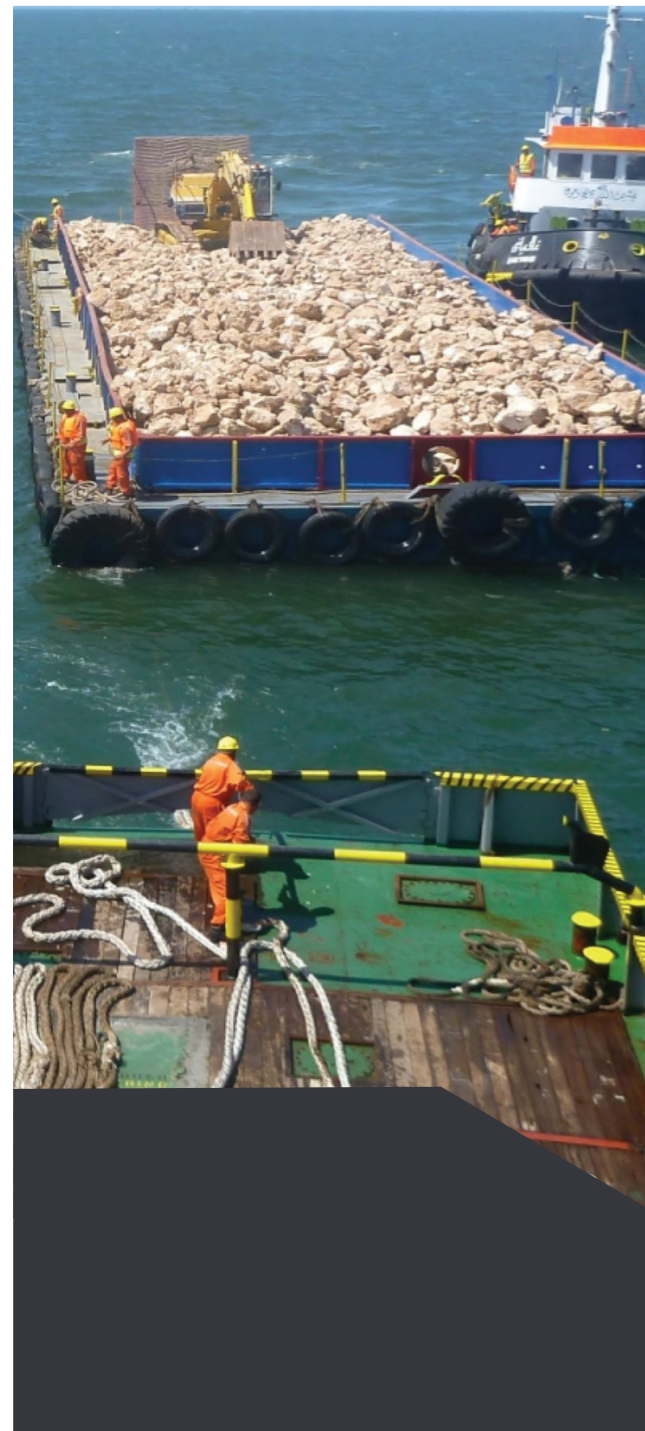


**OHSAS 18001-2007**  
Certificate of registration  
Integrated cobtracting works



**ISO 14001-2015**  
Certificate of registration  
Integrated cobtracting works

# OUR SERVICES



*we pride ourselves on making unimpeachable trust and rectitude the essence of Archimarine*



### Shore protection

seawalls, groins, submerged breakwater, geotube, reef balls



### Marine structures

Harbor Quays and marine structures



**Petroleum services and berths maintenance.**

# ADDITIONAL SERVICES

### Marine Structures

Archimarine offers all marine and fluvial work , through the construction of "seawalls, groins, geo tube , reef balls ,breakwater of all kinds"

### Road Structures

We offer in archimarine all construction works for structures in roads, bridges, railways and airports.

### Building Constructions

We contribute to the construction and contracting of the buildings with maximum commitment to specifications and follow the project schedule



**We  
Creat  
Creative  
Work To  
Grow  
Your  
Business**

# EQUIPMENTS

## TUG AND CREW BOAT

01

### Boat description

The boat fitted with three air conditioned saloons with capacity of 25 person other than crew.

The boat has two cabins for accomodation of four crew



02

### Main Particulars

Length Over All: 23.20 Meters

Breadth: 7.50 Meters

Depth: 3.30 Meters

Maximum Draft: 2.20 Meters.

Propulsion: Two Ducted  
Conv. Propellers

Engines :2x MAN-2642LE410

-1100 hp-2100 rpm

Fuel Tanks: 32 tons.

Total Power: 2200 hp.



03

### Power source

The Tug fitted with One Gensat 155KV-50 Hrzs As 380/220 power source.

24 DC-Emergency Batteries

380/220 Power Sockets on Deck.

The Boat has one Diesel Fire Pump With Manual Monitor.

04

### Deck Area

Total Free Deck Space 80 Square Meters.

The Boat Fitted with Bollard and Towing Hock with 25 SWL.

The Tug Fitted with Fore and Aft Fenders for Pushing Job.

1. GPS-ONWAKP 8299,

2. VHF GMDSS-(HT-649).

3. RADAR-ONWA-32 NMies.



# EQUIPMENTS

## ARCHIMARINE 2

01

### Main Particulars

Type: Material, Accommodation Barge

Length Over All: 55.00 Meters

Breadth: 20.00 Meters

Depth: 3.75 Meters

Maximum Draft: 2.40 Meters.

Flag: Egypt

Port of Registry: Alexandria

Material: Steel

Date of Built: 2021



02

### Power source

The Barge fitted with One Genset 60 Hrzs As power source for the mooring winches.

One Genset for Domestic use 50 Hrzs.

The Barge fitted Work shop Protected from the Sea at the Barge Aft. With 380/220 V Power Source.



03

### Additional Features

The Barge fitted Control Room for:

-Control the four winches.

-High and Easy Navigation for Barge.

-Protecting the Control Station of the Winches.

The Barge equipped with Two Caravan equipped with:  
-Accommodation for 8 persons. -Two Toilets.



04

### Deck Equipment

Mooring Equipment Four Point Mooring Winches

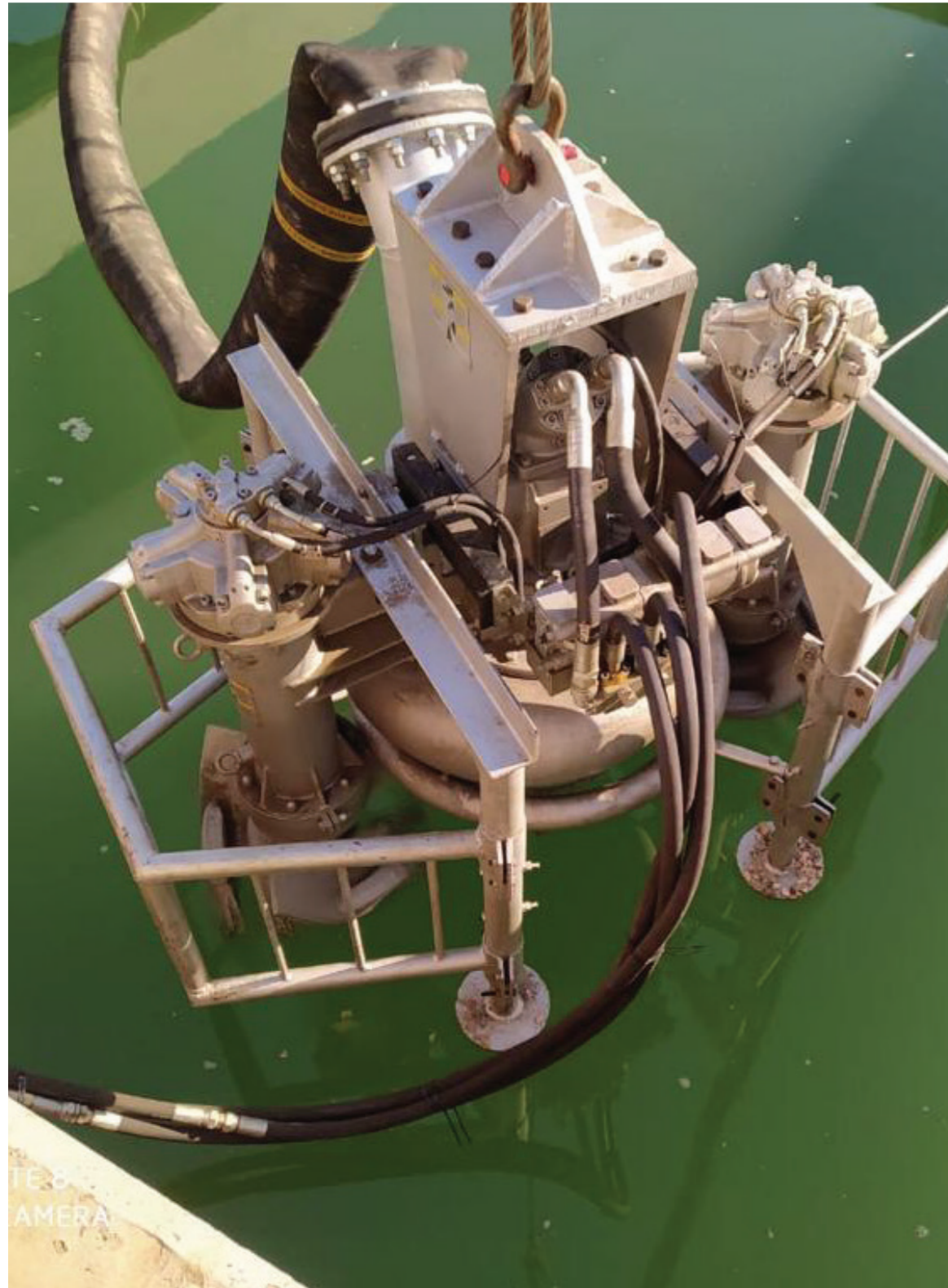
The Barge fitted with four winches 1.5 inches wire diameter, 700 Meters wire Capacity with four anchors with high holding power. Powered electrically from the control unit fitted on barge.



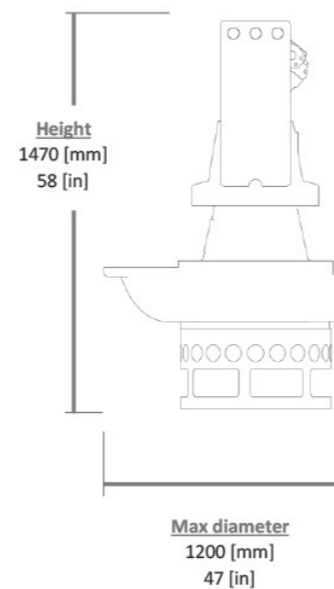
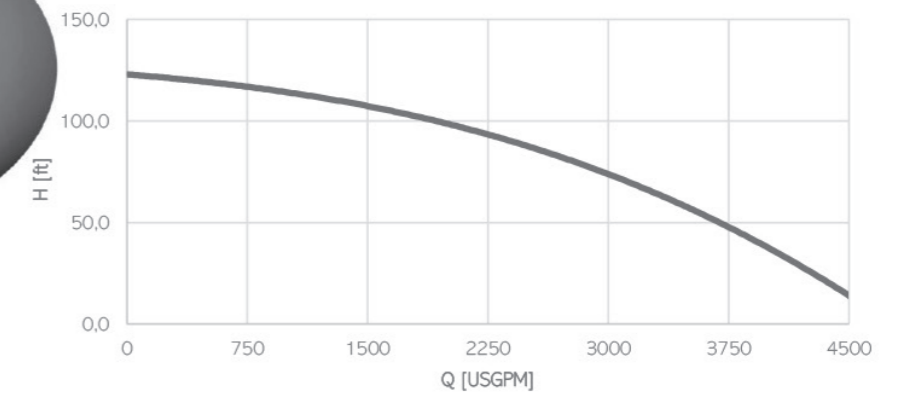
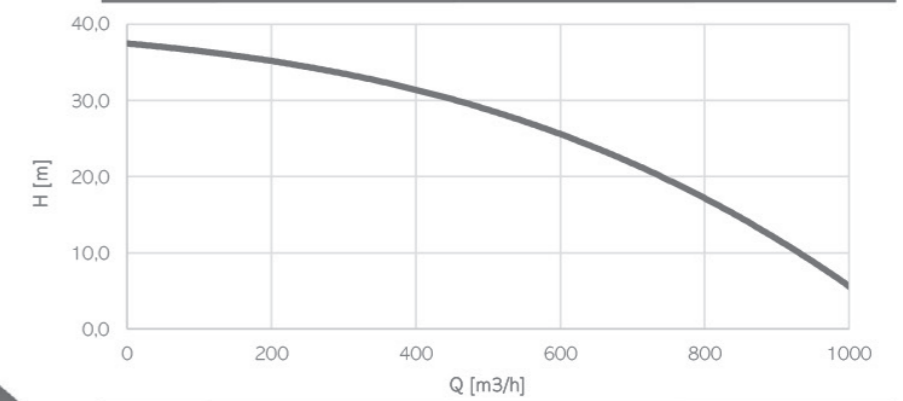
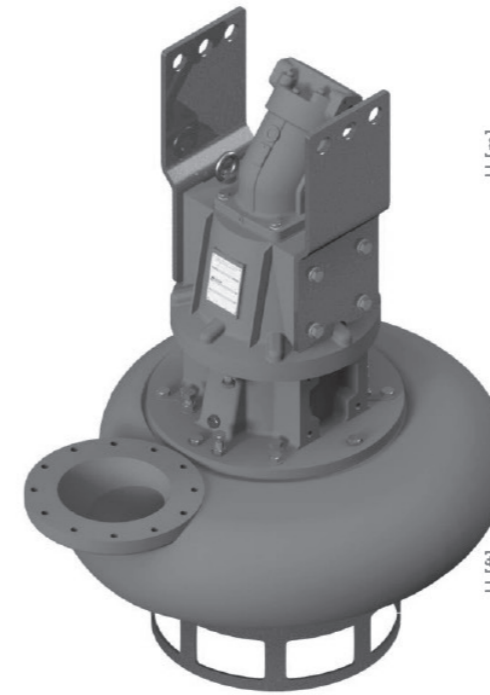


# EQUIPMENTS

## SPECIAL DREDGING



### HYDRAULIC PUMP HY85/180HC



**KG**  
Weight  
1150 [kg]  
2540 [lb]

#### Ports

- Service line Ports: SAE J518 1 1/4in
- Case drain Port: DIN3852 M22x1,5

#### Operating Conditions

- Max liquid temperature 40°C
- Min submersion depth 550mm

Model	HY85/180HC
Brake Power [kW HP]	130   170
Efficiency [%]	43%
RPM Max	1450
Motor Displacement [cc]	160
Oil flow rate max [l/min]	260
Nominal pressure [bar]	300
Max pressure [bar]	350
Solid handling [mm in]	90   3.5
Discharge [DN PN]	250   PN10

#### Materials

Part	Standard
Casing	Cast Iron EN-GJS800
Body	Cast Iron EN-GIL250
Wear Parts	High chrome EN-GIN-HV600 (CH6)
Minimum hardness [HB]	550
Main shaft	High tensile 39NiCrMo3
PH Range	5-10

#### Seals and lubricants

Version	HY85/180HC	MG	MS
Motor Side	LIPS	MECHANICAL	MECHANICAL
Impeller Side	LIPS	LIPS	MECHANICAL
Oil type	EP320	ISO32	ISO32

# EQUIPMENTS

## SPECIAL EQUIPMENTS



# PROJECT

## Protecting El-Gameel Embouchure



### Project Overview

Construction of two groins, each with a length of 350 meters, at the boundaries of the estuary. The project involves several key components, including the supply and installation of geotextile mats and a gradient weights of dolomite stones have been supplied and installed. The project have also entailed the casting, curing, and installation of tetrapod blocks, each weighing 2 tons.

To complete the construction of the groins, concrete have been cast for the crowns and slabs of the groins crest.



El-Gameel Region  
Port Said City



# PROJECT

## Petrobel's Shore Protection Project at Nidoco 6&11



### Project Overview

Construction of eight groins with average length from 75 to 120m each, consisted of dolomite stones with variant gradients, Armor layer of Tetrapod 2 ton and foundation layers of geotextile mats.

**The owner:** Belayim Petroleum Company.

**Project designer:** Coastal Research Institute – Cori

**The supervisors Engineers:** Dr. Ihab Tolba



At NIDOCO  
6 & 11



# PROJECT

## Construction of special Armed Forces harbor



### Project Overview

Construction of a special armed forces harbor featuring a 521 meter main breakwater and a 174 meter secondary breakwater. The project included the execution of two new sheet pile quay walls, measuring 60 and 70 meters in length, for marine units and a jetty of dimensions 10\*90 meters, constructed using 50 cm diameter pipes and extending 24 meters. A 60 meter Ship Lift have also been constructed to accommodate marine units. Additionally, the project involved the installation of new solar system light poles, fenders, bollards and the dredging of the approach channel and basin area.



Abo-Qeer  
Alexandria City



# PROJECT

## The repairing of the ELNG Breakwater



### Project Overview

Strengthen Breakwater toe and body by using 26 ton of Core-loc and repairing the damage footing using (10-250) Kgs of the dolomite stones by using the marine equipment.

**The owner:** ELNG

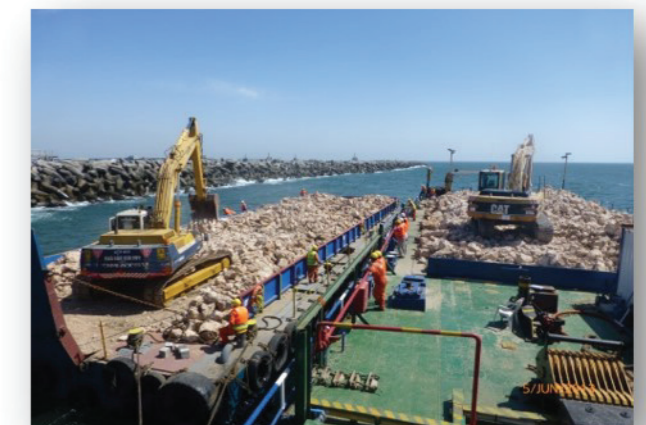
**Project designer:** COWI

**The supervisors Engineers:** The Engineering Center- Faculty of Engineering – Alexandria University.

The planned execution period: 18 months.



IDKU City



# PROJECT

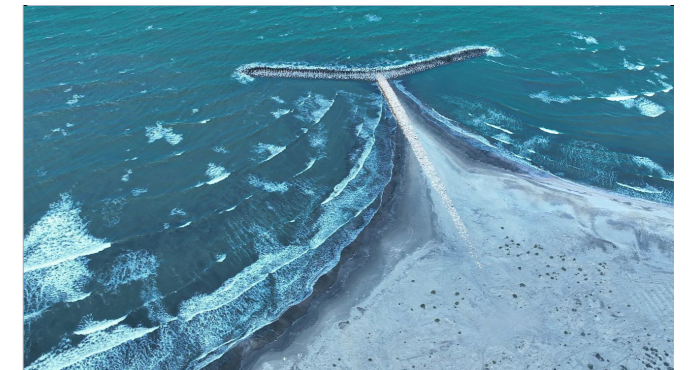
## The Protection of Region Eastern



### Project Overview

Constructing a 300m seawall of gradient weights dolomite stones and Y shaped groins of a 250m length for the body and 100m for each wing. Along with executing sand nourishment for 1200 m of the shore line and another seawall 700m in length to protect existing road. Finally & for the first time in Egypt, constructing 100 m for the shore protection by using the Geotube as a trail project.

**Owner and designer:** The shore protection public Egyptian authority.



Damietta Port  
Ras El-Bar



# PROJECT

## The protection and the rehabilitation in front of Tabyet El-Abed



### Project Overview

Construction of shore protection in front of Tabyet El-Abed at Rasheed â·fi El-Behera city.

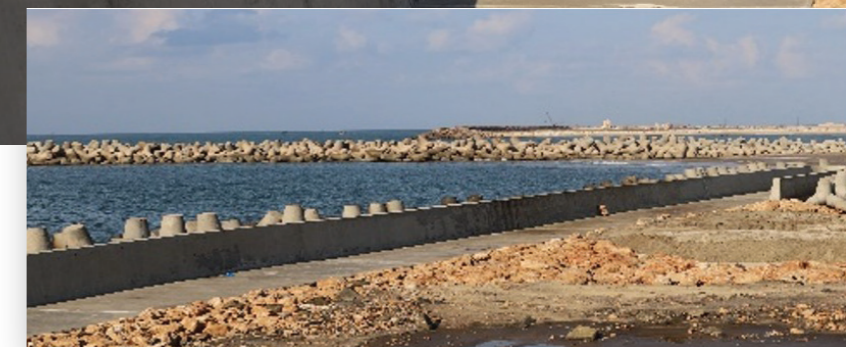
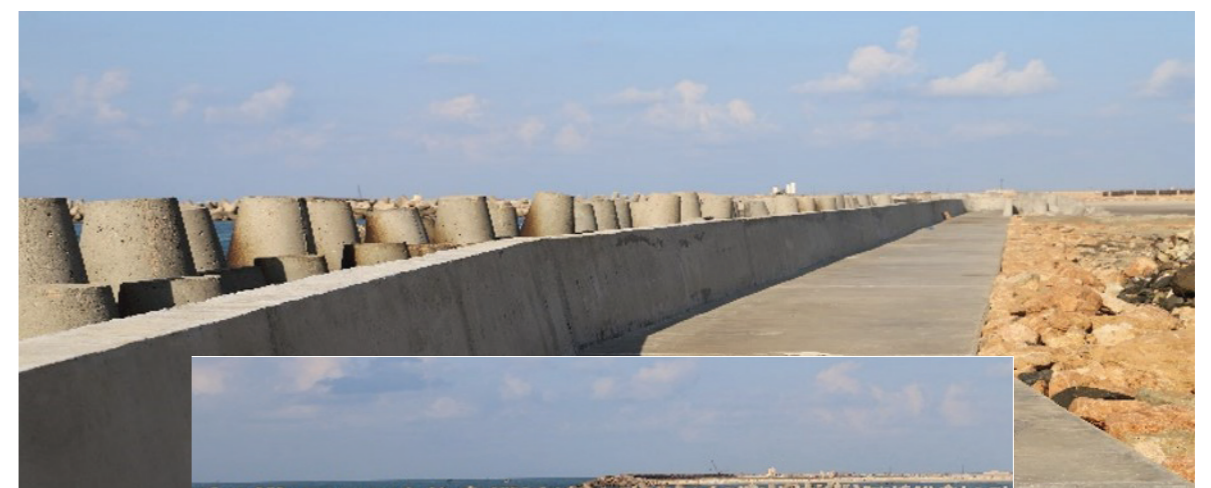
Along with Strengthen the seawall with buffers by using tetrapod blocks with weight 6 and 12 ton and replacing the existing 5-ton dolos blocks.

**The owner:** The shore protection public Egyptian authority.

**Project designer:** The shore protection public Egyptian authority..



*Rsheed  
El-Behera City*





# PROJECT

## Shore Protection Works For Villas Island Project of New Alamin



### Project Overview

The aim of the project is to construct 4 Mazarine Islands for the development of Alamin's city through the dredging and excavation of 475,000 cubic meters of a waterway. In order to ensure stability, 5000 meters of slope protection have been implemented using a blend of materials, including non-woven geotextile mats, dolomite stones of different weight classes as revetments with cement, and concrete blocks.



Villas Island  
New Alamin City



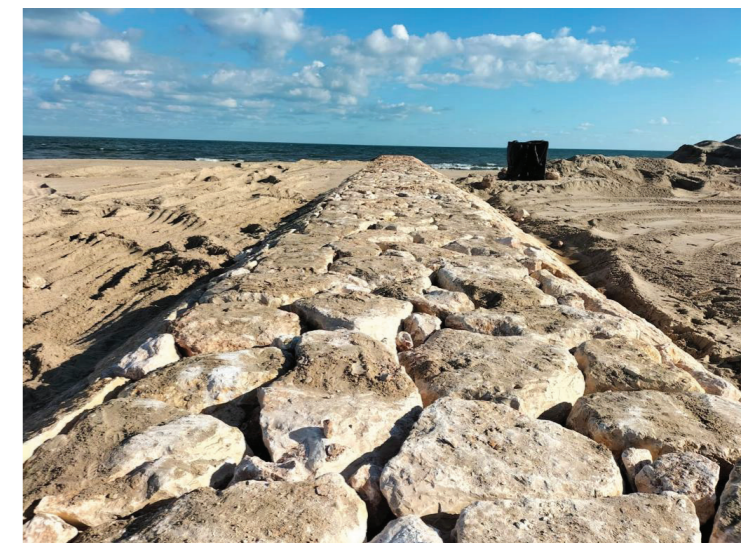
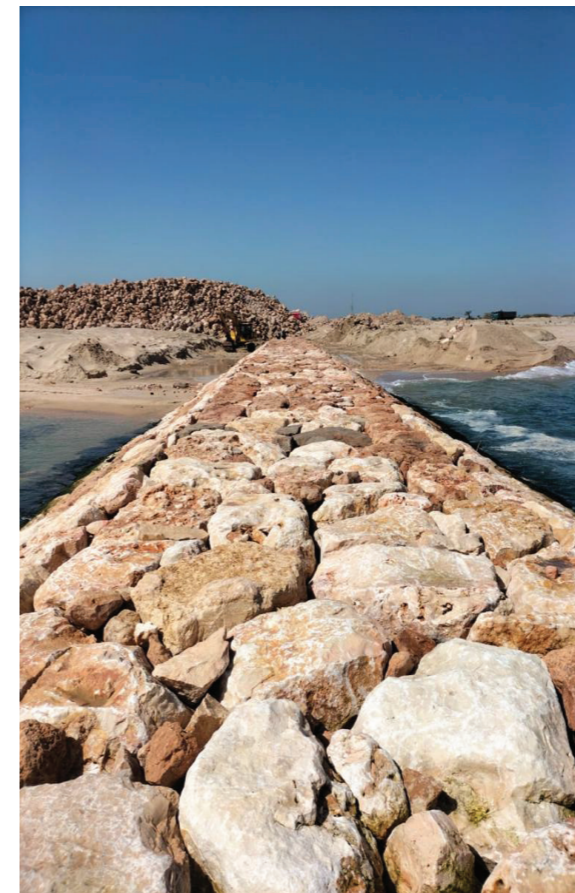
# PROJECT

## Shore protection project for East Kitchener Area



### Project Overview

Construction of 13 groins of lengths varying from 90 to 130 meters using a combination of dolomite stones of varying weights, a 2-ton armor layer of tetrapods, and a foundation of geotextile mats, with sand nourishment of 600,000 m<sup>3</sup> between consecutive groins to reach a height of 1.80 meters. Also, executing the extension of west groins of the estuary (Kitchener).



East Kitchener Area



# PROJECT

## Canal Rehabilitation and Lining Project

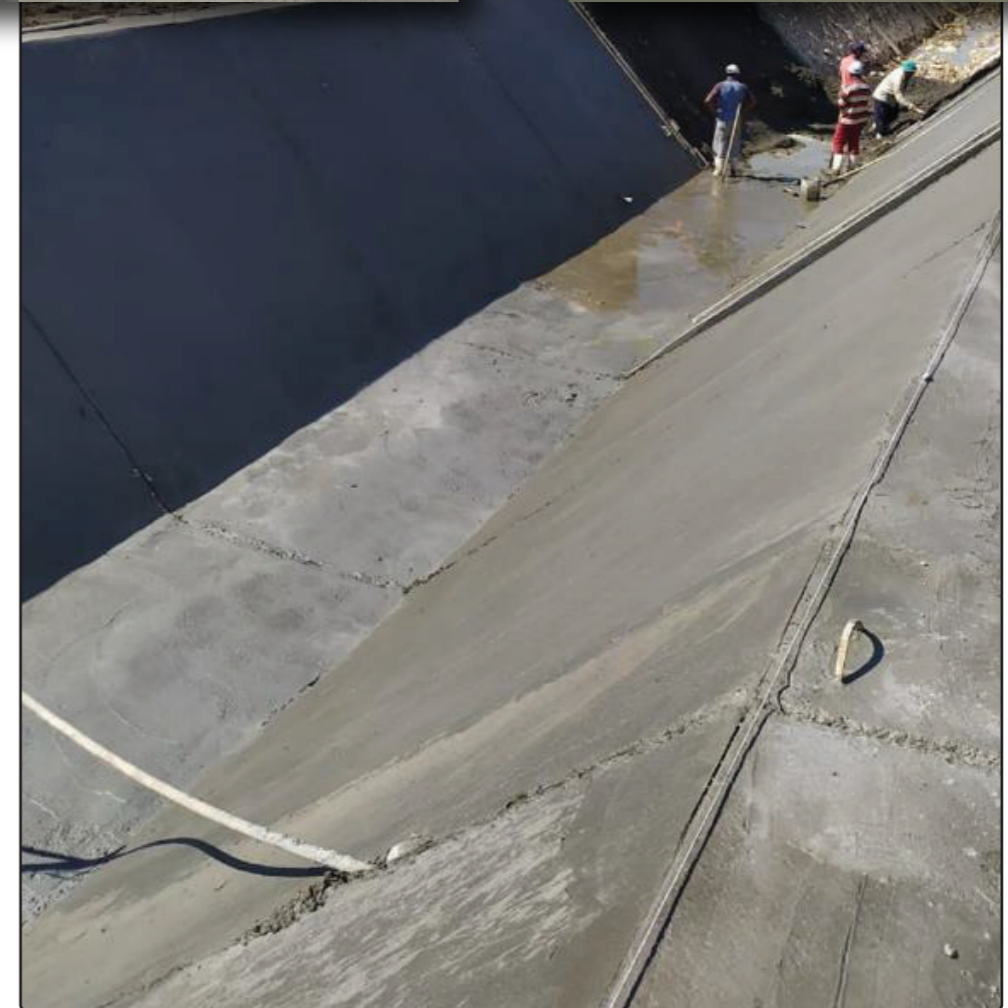


### Project Overview

The objective of this project is to rehabilitate and upgrade 60 kilometers of canals in Kafr El Sheikh through the application of a dry stone coating of 30 cm thickness to the bed, slopes, and top toes. The rehabilitation process begins with excavation, refill, and compaction to achieve the desired shape and contour of the canal. The final step involves casting a 10 cm concrete layer and painting the surface with anti-permeable materials to ensure durability and longevity..



Canals  
Kafr El Sheikh City



# PROJECT

## Protection of the West Nile River

### Estuary Rashid Branch



#### Project Overview

Construction of sand bridge to protect low-lying area from immersion at 200 m from shoreline with sections that consists of dolomite stone revetment, cement mixture and crushed stone layer with a base of geotextile mats and finally putting sand traps to build the area.



West Nile River  
Rashid City



# PROJECT

## Construction Marine Berth at Borolos Harbor



### Project Overview

Construction of marine quay of 150 meters in length for the installation of heavy equipment for Borolos Power Plant, including 6000 square meters reinforced concrete backyard, storage yard with concrete flooring tiles expands 12000 square meters and 2 kilometers Concrete Roads.



Marine Berth  
Borolos Harbor

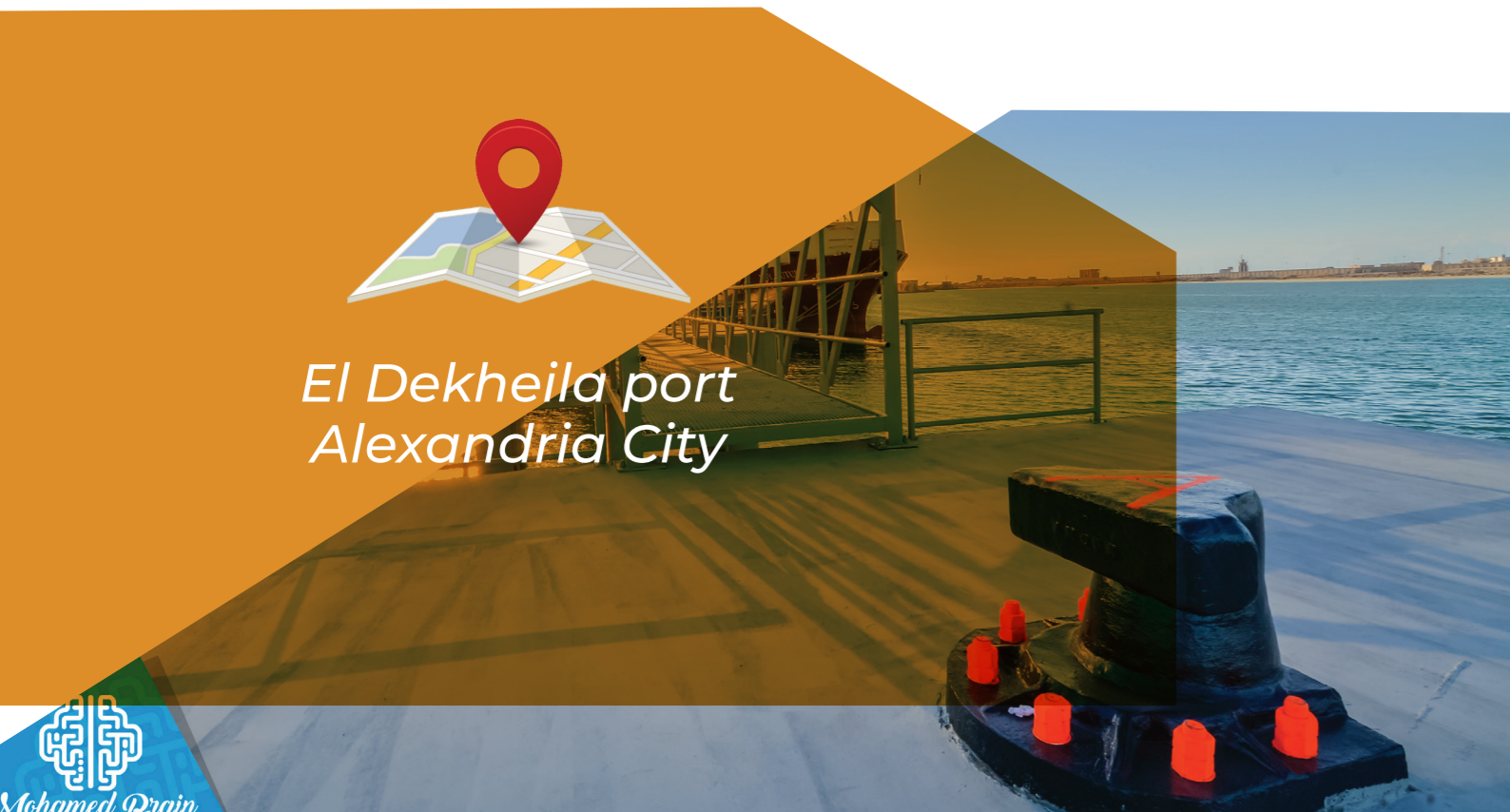
# PROJECT

## Mooring dolphins at berth 98 El Dekheila port



### Project Overview

The extension of berth 98 at the El-Dekheila port quay wall by 50 meters with the construction of two mooring dolphins. Through Installation of 18 steel pipe piles filled with reinforced concrete, as well as the connection of the mooring dolphins via catwalks measuring 40 meters in length.



# PROJECT

## Building and construction projects



### Project Overview

Construction of two apartment building owned by the new urban communities Authority for the project of medium housing (DAR MISR PROJECT) at the settlement region in New Cairo.



the settlement region  
New Cairo



### Project Overview

Construction of Al-Qabari Traffic Unit building, along with relevant gates and fences owned by North Coast Reconstruction Authority.



### Project Overview

Construction of Six apartment building owned by the new urban communities Authority for the project of medium housing (DAR MISR PROJECT) at El Sherooq, Cairo

# Our Dear Customer,



*We pride ourselves on making unimpeachable trust and rectitude the essence of Archimarine.*

**Our Moto**  
SEO Message

## THANK YOU

For taking the time to read our company profile.

